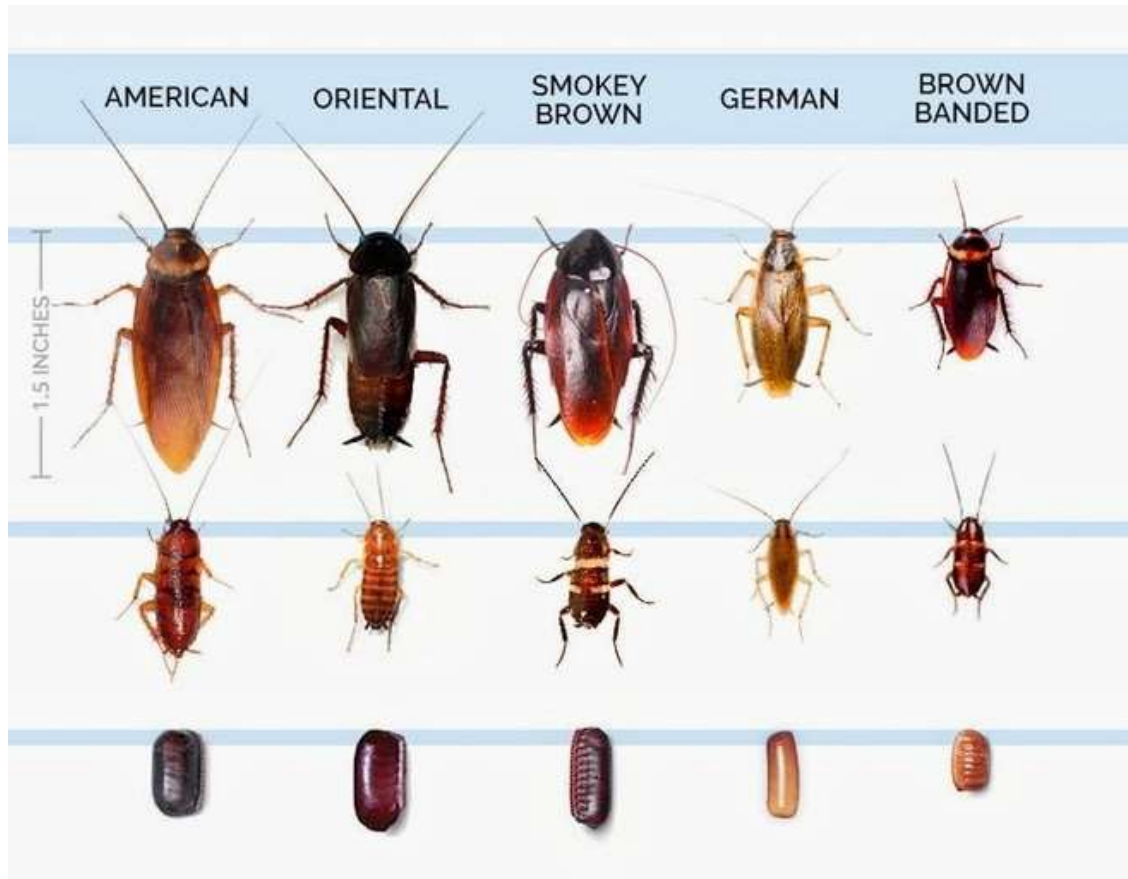




Registration. No. 151961
License No. CPC-187/UP/LKO

Cockroaches



- Cockroaches are flattened, brownish, fast-running insects, with long, slender antennae. There are three life stages: egg, nymph, and adult. The female cockroach produces small, brown, bean-shaped egg cases that are deposited in out-of-the-way places.
- Cockroaches do not live in centralized nests or colonies like ants, bees, and termites.

Types of Cockroaches

- German Cockroach (*Blattella germanica*)
- American Cockroach (*Periplaneta americana*)
- Oriental Cockroach (*Blatta orientalis*)
- Brownbanded Cockroach (*Supella longipalpa*)
- Wood Cockroaches (*Parcoblatta* species)

Insecticides



**(Imidacloprid 21% SC and
Betacyfluthrin 10.5% SC)**

is a combination product suitable as residual spray for the control of cockroaches.

